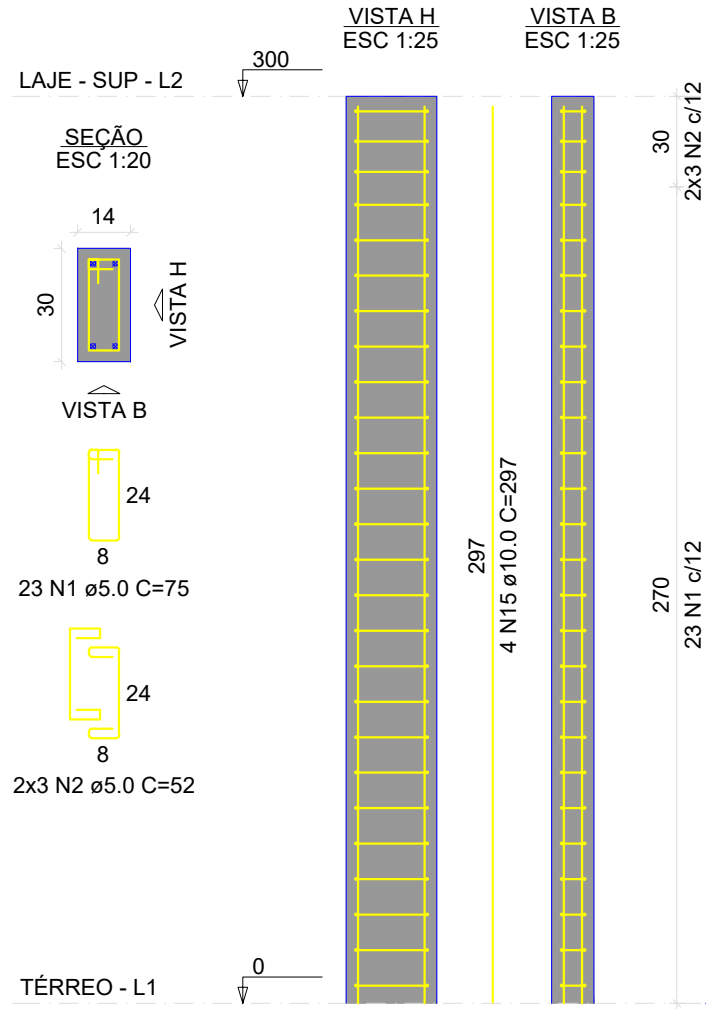
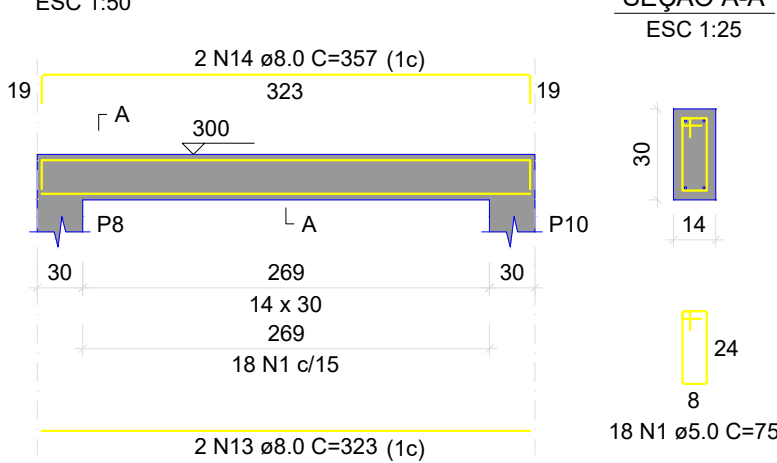


P1=P2=P3=P4=P5=P6=P7=
=P8=P9=P10=P11=P12=
=P13=P14



V9



RELAÇÃO DO AÇO					
14xP1	V1	V2			
V3	V4	V5			
V6	V7	V8			
V9					
AÇO	N	DIAM (mm)	QUANT	C.UNIT (cm)	C.TOTAL (cm)
CA60	1	5.0	619	75	46425
CA50	2	5.0	84	52	4368
	3	8.0	4	1008	4032
	4	8.0	2	1042	2084
	5	8.0	6	488	2928
	6	8.0	6	522	3132
	7	8.0	2	1046	2092
	8	8.0	2	496	992
	9	8.0	2	424	848
	10	8.0	2	458	916
	11	8.0	2	173	346
	12	8.0	2	207	414
	13	8.0	2	323	646
	14	8.0	2	357	714
	15	10.0	56	297	16632

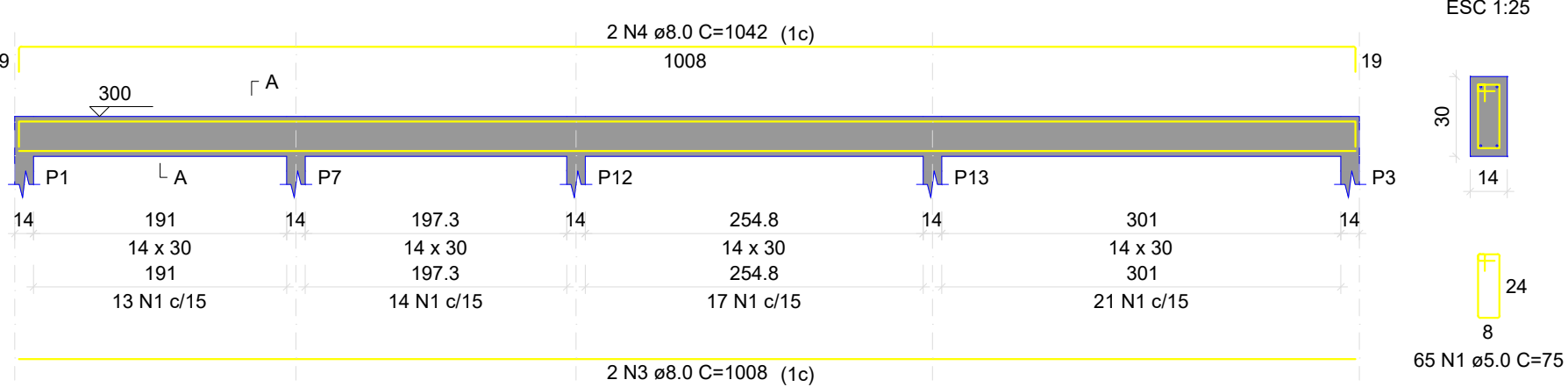
RESUMO DO AÇO

AÇO	DIAM (mm)	C.TOTAL (m)	PESO + 10% (kg)
CA50	8.0	201.9	87.8
CA60	10.0	166.3	112.8
CA60	5.0	507.9	86.1
PESO TOTAL (kg)			
CA50	200.4		
CA60	86.1		

Volume de concreto (C-25) = 5.88 m³
Área de forma = 61.84 m²

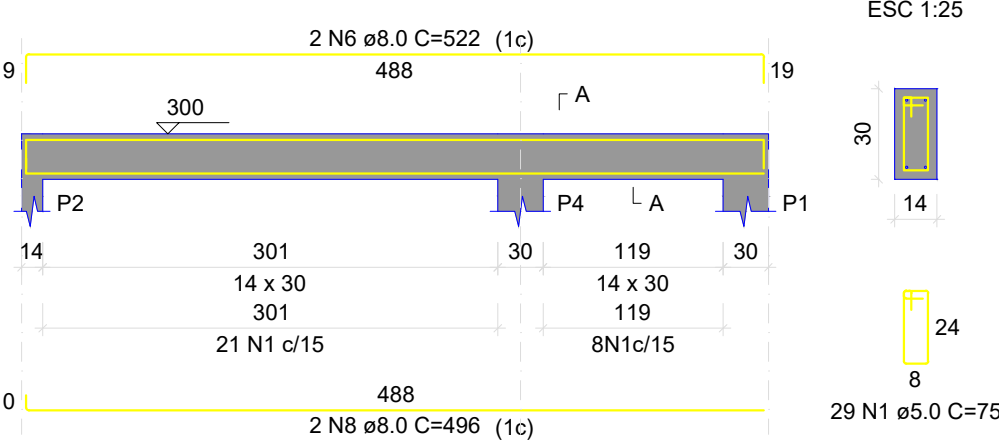
V1

ESC 1:50



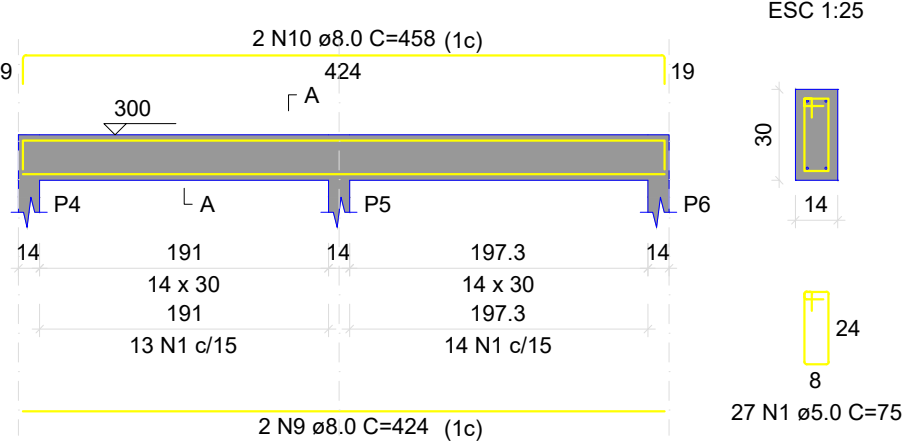
V4

ESC 1:50



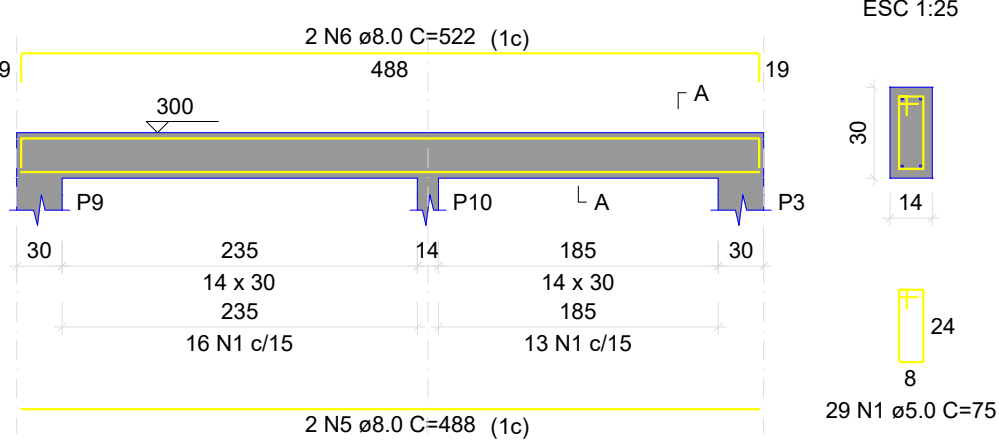
V5

ESC 1:50



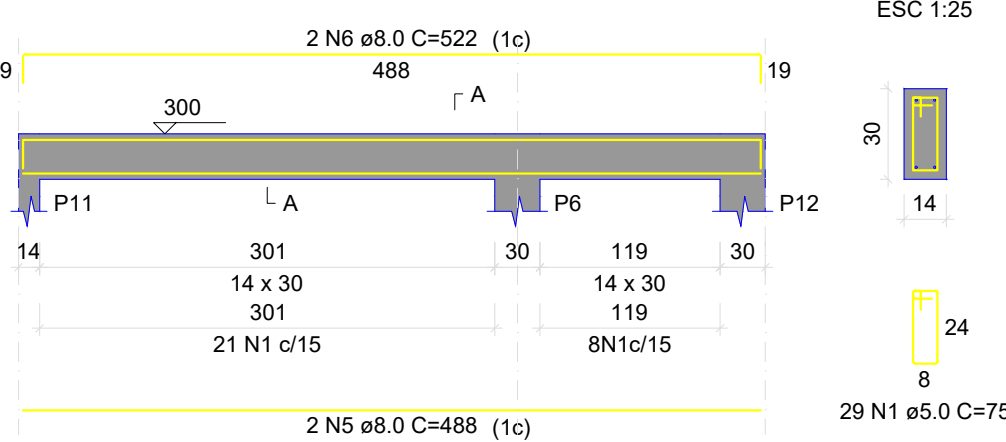
V2

ESC 1:50



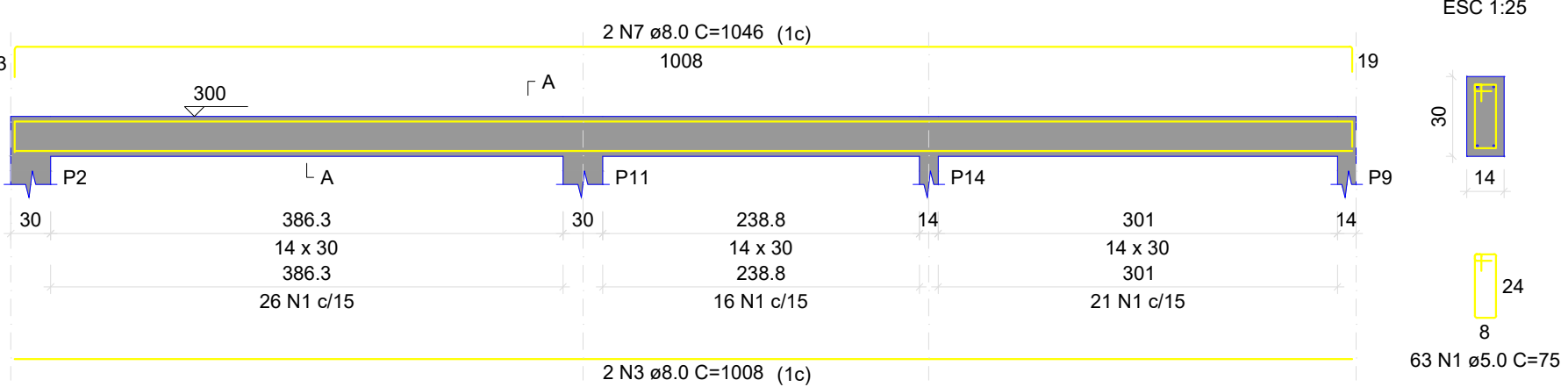
V6

ESC 1:50



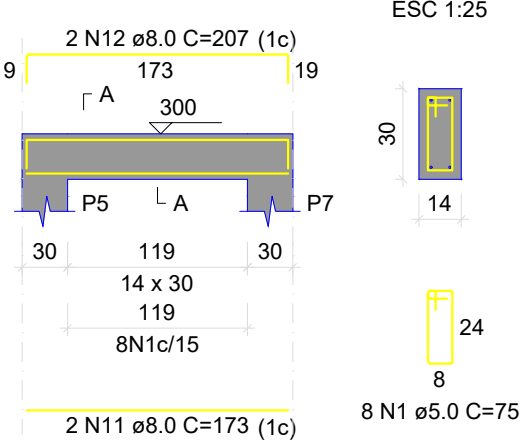
V3

ESC 1:50



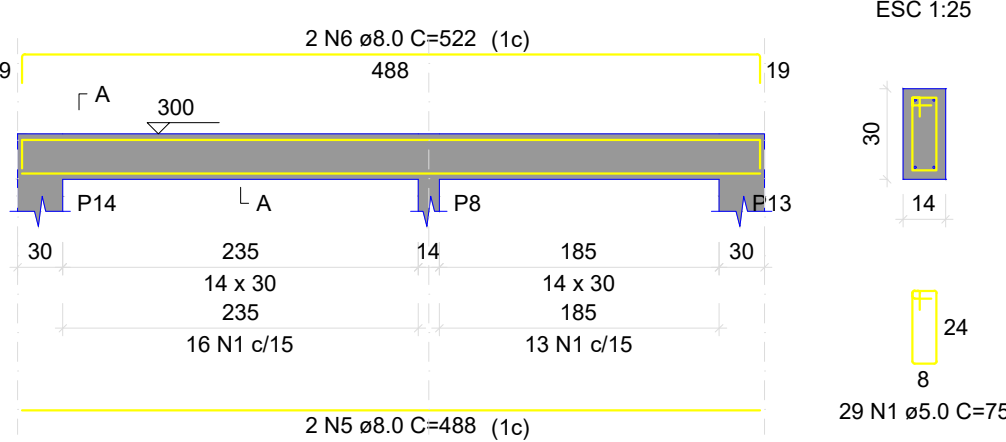
V7

ESC 1:50



V8

ESC 1:50



ARMAÇÃO POSITIVA DAS LAJES DO PAVIMENTO LAJE - SUP (EIXO X)

Escala 1:50

ARMAÇÃO POSITIVA DAS LAJES DO PAVIMENTO LAJE - SUP (EIXO Y)

Escala 1:50

PLANTA DE VIGOTAS PRÉ-MOLDADAS

Escala 1:50

IGUAÇU HUB

OBRA:					CENTRO DE EQUOTERAPIA				
PROPRIETÁRIO:					ASSINATURA:				
PREFEITURA MUNICIPAL DE SÃO MIGUEL DO IGUAÇU									
CNPJ: 76.206.499/0001-50									
RESPONSÁVEL TÉCNICO:					ASSINATURA:				
ENG. CIVIL CARLA CAROLINE FACCHI									
CREA PR 143266/D					ART n°:				
PRANCHA:					SEQUENCIA:				
ESTRUTURAL PAVIMENTO SUPERIOR					04/04				
PLANTA E DETALHAMENTOS									
ARQUIVO:		DESENHO:		DATA:		ESCALA:		REVISÃO:	
EQUOTEPARIA		IGUAÇU HUB		FEV/2025		INDICADA		01	